

Nau Mai, Haere Mai!



Presence

Welcome to Vision Sunday 2023!



Prizing God's Presence

Present with One Another

Standing in our Presence in the City

Key Stats

	2022	2023 (end August)
Total Membership		761
Weekly Attendance – Total	539	557
Weekly Attendance - Online	153 (28.4%)	118 (21.1%)
Weekly Attendance – in Person	386 (71.6%)	439 (78.9%)
Children’s Church (0-15)	56	60
Baptisms	20	12

Key Events

Bicultural
Journey

Open
Heaven

Resurrection
Service

Celebration
Sundays

Waitangi Day
Matariki Services
Parihaka

800 Attendees
at The Regent

1200 Attendees
at Town Hall

Uncle Then's
Retirement
Matariki
Next Sunday..!

Celebrating *Ministries*

Women's



Playgroup



Beautiful Feet



Evergreens



Night Church





Governance Structures

Oversight

Jane Wilden



Peter Sara



Gabe Chan



Heather Wishart



Emma Anderson



Jekope Maiano



Lesley Gill





Elim



Elim Dunedin
Staff Team

Senior Management Team



Gabe Chan
Senior Leader



Rebecca Chan
Senior Leader



Wendy Folland
Operations Director



Lindsay Tamblyn
Executive Pastor



Petone White
Worship Director

Pastoral Staff



Mau White
Pastoral Care



Elley Griffiths
Youth Pastor



Nicole Klemetson
Kids Pastor



Cam Boyd
Dream Team



Maddie Houliston
Night Church



Agyeibea Egbuji
Kids Intern

Operational Staff



Mariana Kritzinger
Finance Manager



Ben Hardie
Finance Team



Emma Jackson
Personal Assistant to Chans

Jane Wilden



Peter Sara



Gabe Chan



Heather Wishart



Emma Anderson



Jekope Maiano



Lesley Gill

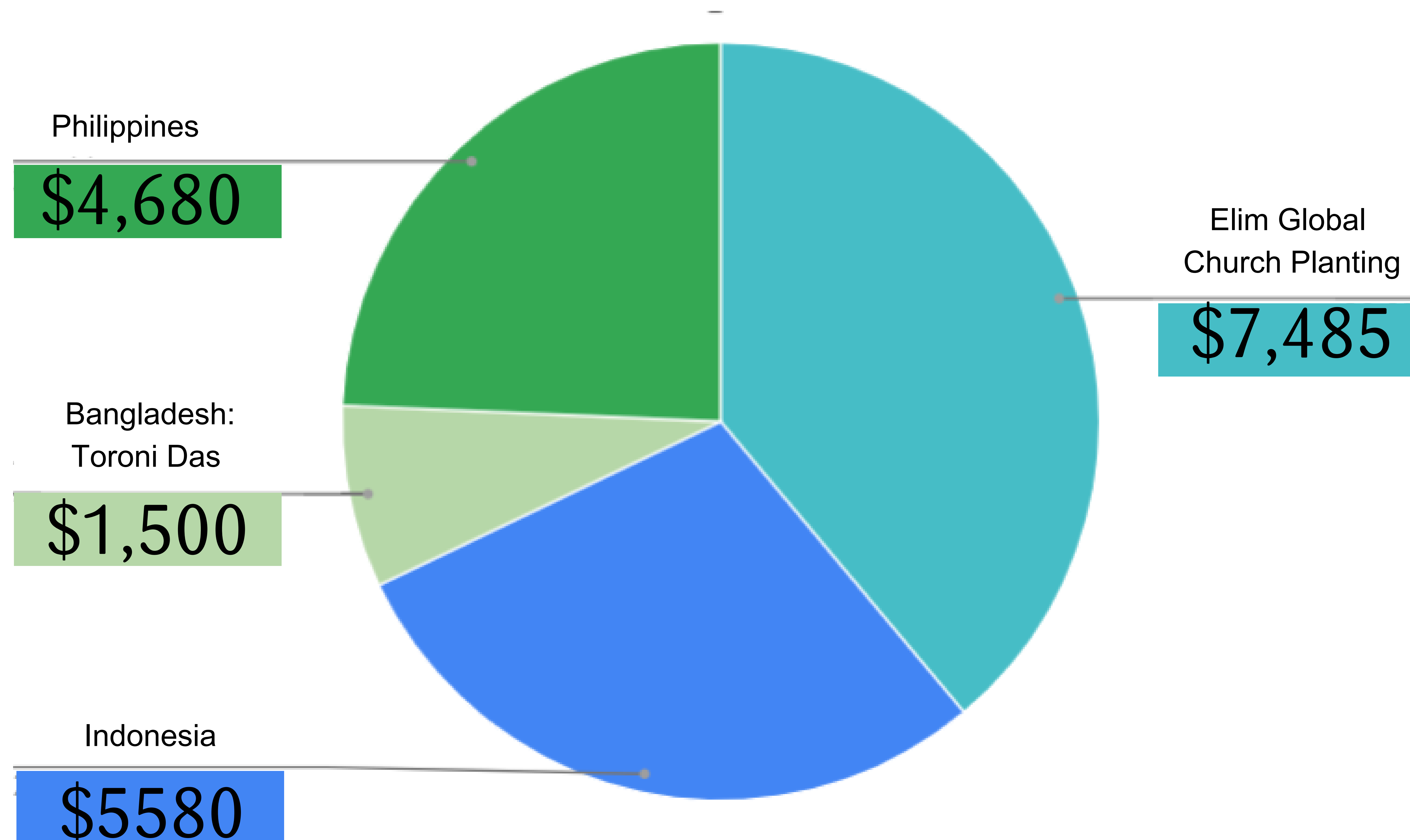




Toroni Das, Bangladesh
Church Planter

Total Giving to Partner Organisations: \$38,385.00

International Mission Partnerships



LOCAL MISSIONS

Christmas Touch - \$8,000

Family Boxes - 25

Gifts to Individuals - 28

Gifts to inmates - 400

Gifts for neighbour businesses - 12

Servants Health Center \$720

Rhema Broadcasting \$420

SPECIAL GIVING

In 2022:

Ukraine \$10,000

In 2023:

Cyclone in New Zealand - \$3,000

Earthquake in Turkiye/Syria - \$5,000

What are the next steps for *Mission*?

- Shift our understanding of mission – all that we do as a church has mission impact, beginning with our pastoral care, through to ways we interact with the City and beyond.
- Increase our direct financial contributions to *partners, missionaries and causes*, aiming for 10% of our general giving by end 2024.-
- Next 4 months, comprehensive review of missions relationships
- Cultivate long-term relationships
 - Increase our Christmas Touch ministry to be a major Dunedin blessing ministry at Christmas
 - Create partnerships across the city for full year support
 - Identify new church planting or discipleship opportunities overseas
 - Printing Bibles for Distribution
 - Pioneering church plants
 - Discipleship ministries

A Disciple where you least expect one

Are you willing to GO
to the people that
JESUS sends you to?

Mark 5:1-20 ESV

They came to the other side of the sea, to the country of the Gerasenes. 2 And when Jesus had stepped out of the boat, immediately there met him out of the tombs a man with an unclean spirit. 3 He lived among the tombs. And no one could bind him anymore, not even with a chain, 4 for he had often been bound with shackles and chains, but he wrenched the chains apart, and he broke the shackles in pieces. No one had the strength to subdue him. 5 Night and day among the tombs and on the mountains he was always crying out and cutting himself with stones. 6 And when he saw Jesus from afar, he ran and fell down before him.

Mark 5:1-20 ESV

7 And crying out with a loud voice, he said, "What have you to do with me, Jesus, Son of the Most High God? I adjure you by God, do not torment me." 8 For he was saying to him, "Come out of the man, you unclean spirit!" 9 And Jesus asked him, "What is your name?" He replied, "My name is Legion, for we are many." 10 And he begged him earnestly not to send them out of the country. 11 Now a great herd of pigs was feeding there on the hillside, 12 and they begged him, saying, "Send us to the pigs; let us enter them." 13 So he gave them permission. And the unclean spirits came out and entered the pigs; and the herd, numbering about two thousand, rushed down the steep bank into the sea and drowned in the sea.

Mark 5:1-20 ESV

14 The herdsmen fled and told it in the city and in the country. And people came to see what it was that had happened. 15 And they came to Jesus and saw the demon-possessed man, the one who had had the legion, sitting there, clothed and in his right mind, and they were afraid. 16 And those who had seen it described to them what had happened to the demon-possessed man and to the pigs. 17 And they began to beg Jesus to depart from their region. 18 As he was getting into the boat, the man who had been possessed with demons begged him that he might be with him.

Mark 5:1-20 ESV

19 And he did not permit him but said to him, "Go home to your friends and tell them how much the Lord has done for you, and how he has had mercy on you."

20 And he went away and began to proclaim in the Decapolis how much Jesus had done for him, and everyone marveled.

The Power in Discipleship

The power of prayer

The power of compassion

The power of community

The power of surrender

The Power in Discipleship

The power of Obedience

The power of Grace

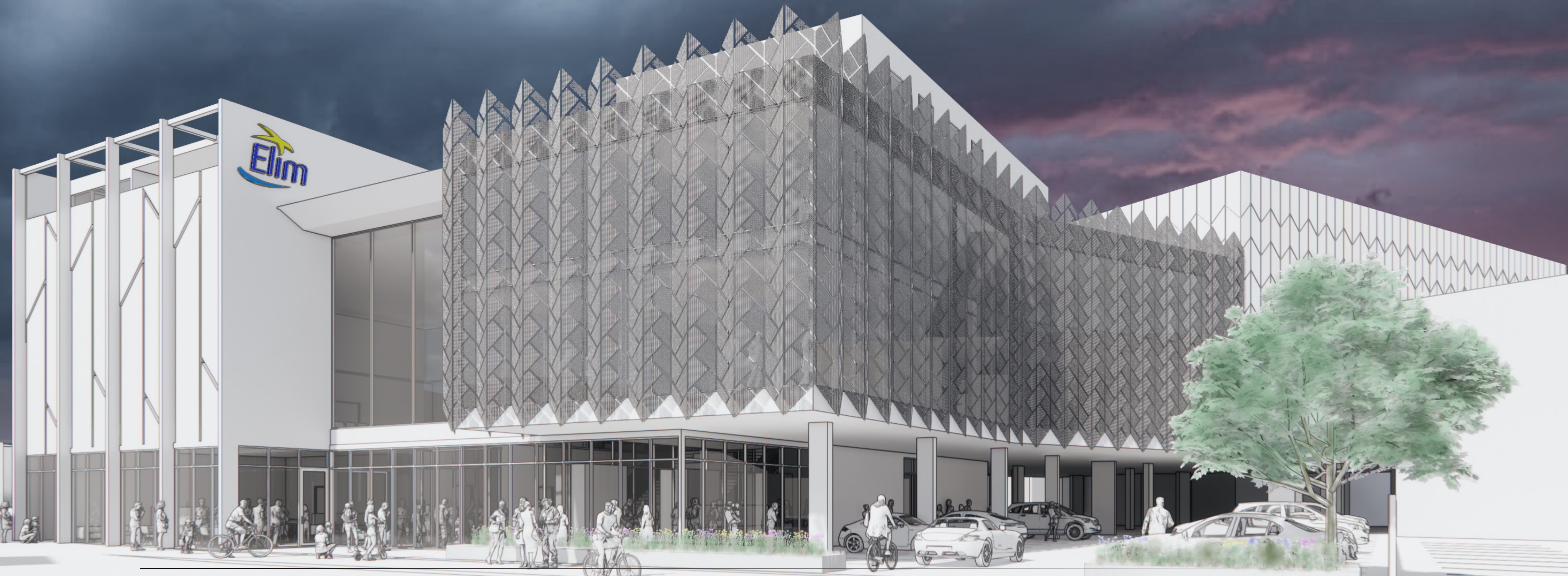
The power of responding to the call of God



Building Update

Elim Church | Concept 1

3D Perspective



Elim Church | Concept 1

First Floor Plan



Things to keep in mind:

- See Concepts at the back at our Building Wall
- We know that you will have many questions, we want to create spaces for us to have conversations
- Different perspectives on building projects
- Funded through increasing our general giving in line with our congregation size, rather than special giving
- Not burdensome – quarterly update
- Starting end of 2025
- Sign up your interest at office@elimdunedin.com



Giving

How we're asking you to engage:

Make Elim Dunedin your home church

Tithe to the Lord

Serve in the House

Respond to the call of God